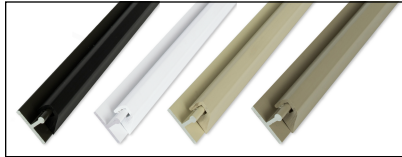


SNAPTRACK INSTALLATION INSTRUCTIONS

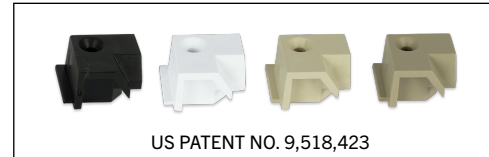
Contents Included In Tube:

- 5 - Aluminum Bases: 3/4"
- 5 - Vinyl Caps: 3/8" x 1/2"
- 75 - #6 1 1/4" Phillips Stainless Steel Screws

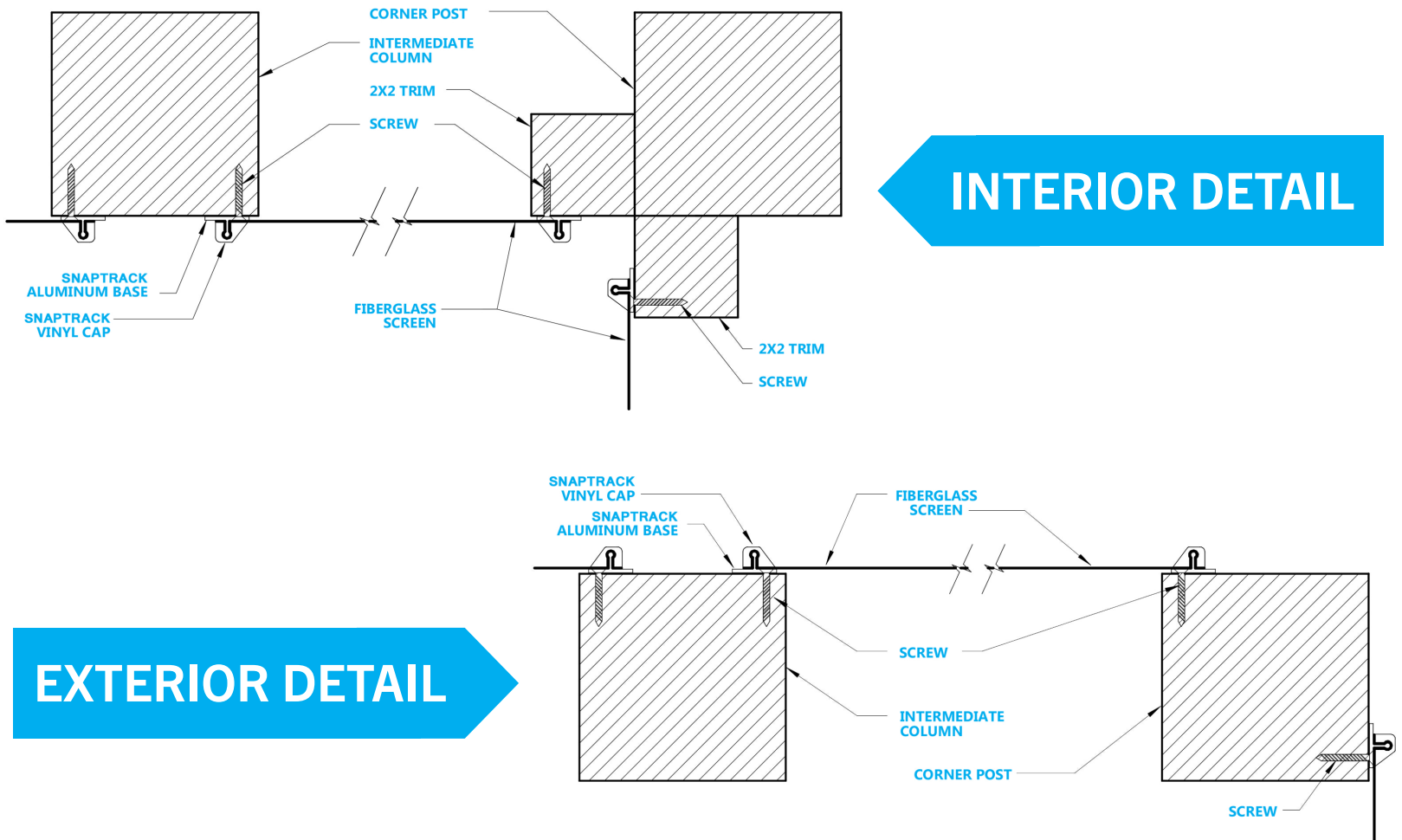


Optional Accessory:

- Plinth Corner Kit
- 4 Corners + 4 Screws
- The Plinth allows for straight cuts
- *Sold Separately



SNAPTRACK by SCREENEZE® can be installed on the inside or outside face of your porch



SNAPTRACK QUICK TIPS

- Read the instructions from beginning to end
- Start with the smallest panel first and do one panel at a time
- The beveled edge of the Vinyl Cap will ALWAYS face toward the screen opening and will cover the screw heads
- Pencil identifying marks on the corresponding Vinyl Cap and its Aluminum Base so they are easily kept together and organized when completing installation
- To cut SNAPTRACK use a 10" miter saw with a non-ferrous metal/plastic cutting blade. You may also use a hack saw with a fine-tooth metal cutting blade
- If it's windy, place a thumbtack on each corner of the screen fabric to keep it in place and square
- DO NOT STRETCH the screen fabric. SNAPTRACK will uniformly stretch the screen for you. Let the screen drape over the bottom channel and position the screen so there are no wrinkles left or right
- Always install screen fabric on the top of opening first, then bottom, then sides
- When installing in temperatures below 60°, make sure that the vinyl caps are warmed. We recommend using portable heat prior to installation. Cool temperatures can make the vinyl brittle causing it to split/crack during installation. This will occur at the ends so be sure to hand press the caps at the corner and take the previous stated precautions. Also, tap the cap close to a previously expanded point
- If you need to remove the Vinyl Caps to replace the screen fabric use a 5-in-1 tool, a miniature "Wonder Bar", or a small straight screwdriver. Be careful not to scar the Aluminum Base Channel or Vinyl Cap during this process. Be careful not to mix-up the pieces as they might be different lengths

SNAPTRACK INSTALLATION

- 1 Determine if you are going to install SNAPTRACK on the exterior or interior face of your porch (see mounting details on page 1) and if you are utilizing the optional Corner Plinth to avoid miters.
- 2 Slide the Vinyl Cap onto the Aluminum Base to prepare for cutting. Place pencil marks at the inside corner points where you want to install SNAPTRACK and measure distance between points. We recommend holding SNAPTRACK about an 1/8" from the edge of the opening, however, you can install it anywhere on the face of the post.
- 3 After measuring, cut the mitered angle on the SNAPTRACK Aluminum Base and Vinyl Cap together – be sure the Vinyl Cap does not move on Aluminum Base while making cuts. If using the optional Corner Plinth Kit, straight cut the SNAPTRACK 1/8" shorter than your overall measurement. This will leave space for the installation of the Corner Plinth.
- 4 After cutting, slide the Vinyl Cap off of the Aluminum Base – keep pieces organized so you know what piece was paired together and cut for each side of your opening.
- 5 Secure the Aluminum Base to the porch post with included screws. We recommend pre-drilling pilot holes to prevent edge splits depending on materials and closeness to the edge.
- 6 Installing the screen; square the screen fabric to the TOP track and secure the screen with the Vinyl Cap to the Aluminum Base by pressing or tapping the Vinyl Cap with your hand or rubber hammer to the outside corners for about 3" on each end.
- 7 Once the Vinyl Cap is secured at the corners move to the center and again secure screen by pressing or tapping the Vinyl Cap with a rubber hammer. Next tap from the center out towards each corner. Double check that Vinyl Cap is secure and the screen fabric is still square
- 8 Install the Vinyl Cap on the BOTTOM of the opening in the same manner. Then proceed to sides and secure Vinyl Cap over screen fabric in the same manner. If you used the Corner Plinth, DO NOT INSTALL IT NOW.
- 9 Trim excess Screen; using the outside edge of the Vinyl Cap, hold your razor knife at a perpendicular angle as a guide for trimming the screen. Trim the excess screen on all sides of your opening. If you used the Corner Plinth, trim across that point at about a 45-degree cut. See 10 below.
- 10 If you are utilizing the optional Corner Plinth Kit, install with the included screws after you trim the fabric.

SNAPTRACK 10 YEAR LIMITED WARRANTY

TERMS:

10 years from date of purchase

COVERAGE:

We warrant the **SNAPTRACK by SCREENEZE®** aluminum base and vinyl cap will perform as a fixed screen installation system. The **SNAPTRACK by SCREENEZE®** aluminum base and vinyl cap only, will perform as intended for stretching and securing screen fabric in a vertical position on the walls of a traditional screen room

CONDITIONS:

Home Improvement System, Inc., manufacturers of **SNAPTRACK by SCREENEZE®**, will consider claims for manufacturing defects in the aluminum base and/or vinyl cap only. Home Improvement Systems Inc. will replace products with manufacturing defects at the company's discretion

EXCLUSIONS FROM COVERAGE:

- Labor to remove or install replaced material
- Screws
- Screen Fabric
- Defects due to ordinary wear and tear, abusive use, or lack of proper maintenance are excluded from coverage
- Defects caused by improper installation and/or missapplication of the product are excluded from coverage i.e. installed as an awning or roof system regardless of screen material attached
- Defects due to damage to vinyl caps when installing in temperatures below 60 degrees (care should be taken to store material in a heated area prior to installation if temperature is below 60 degrees)
- Defects in the performance of the product due to failure or deterioration of the primary structure that **SNAPTRACK by SCREENEZE®** is attached to

CLAIMS PROCEDURE:

Send claims to:

Home Improvement Systems, Inc.

950 Meadow Gold Lane

Cincinnati, OH 45203

Include proof of purchase, photograph of defect, contact information, and a sample of the defective product. No claim can be considered without prior company approval

EFFECTIVE DATE:

April 1, 2020