

TREX® DECKING COLOR-MATCH COMPOSITE SCREW

Installation Instructions



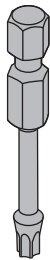
IMPORTANT NOTES:

- » Not recommended for use in salt environments.
- » Not for use with sleeper systems that are less than 2" thick.
- » Always follow deck board manufacturer's installation guidelines.

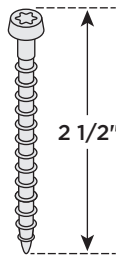
General Installation Recommendations:

- Always use two screws per joist or stair stringer.
- At board ends on the deck's edge, install screws placed perpendicularly at the recommended distance, at minimum of 1" from the board end and edge, without splitting the board.

PARTS & TOOLS NEEDED



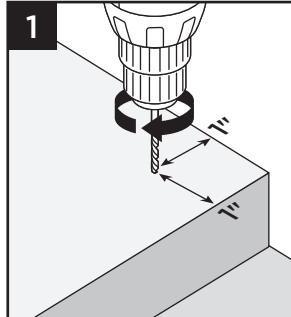
HEXSTIX® HS-20
Drive Bit



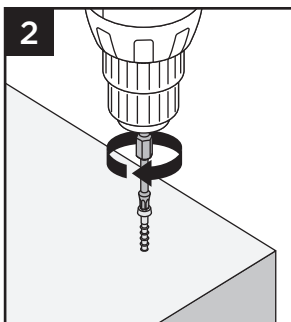
Trex Hideaway® Color-Match
Composite Screw

Installation Instructions:

- For best results pre-drill through deck board only, using 1/8" drill bit. When installing close to the end of the board pre-drilling is required.

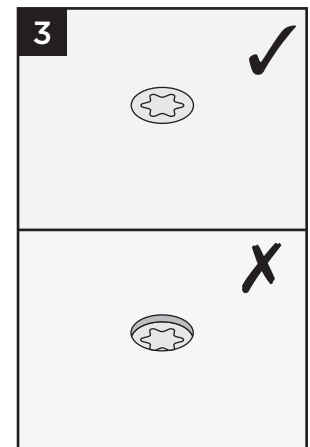


- For best results use an 18V or higher cordless drill and the included HEXSTIX® driver bit, install fasteners at a 90° angle (perpendicular to the board). Always drive screw in one smooth, continuous motion.



- Screws are designed to be installed flush with decking surface.

DO NOT countersink screws.



Note: Never use Torx® ttap® bits in a HexStix® screw.