



Sage System™ Installation Steps — Option 2

Single Pergola, No Sunshade

Tools Needed

	Drill
	3/16" concrete drill bit (4" long min.) 5/16" hex driver bit (when anchoring to concrete/CMU)
	Tape measure
	Ladders
	Level
	2–4 people (depending on pergola size)

Quantity of Parts Needed

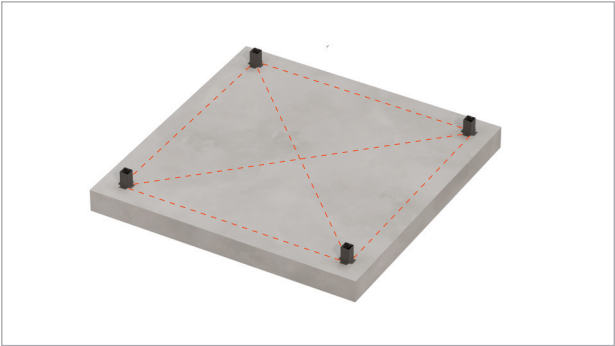
- 2 Sage System corner connector boxes (4 parts)
- 2 Sage System post base connector boxes (4 parts)

Note: All necessary screws and anchors are included in the box. Additional accessories for anchoring to concrete not included are listed in the “Tools Needed” section.

Lumber Details

- 8 pieces of 4x4 or 6x6 lumber, depending on part size. Parts are made to fit 4x4 or 6x6 dry, straight dressed lumber. Dressed wood has eased edges and is planed on all sides.
 - 4x4 actual dimensions: 3 1/2" x 3 1/2"
 - 6x6 actual dimensions: 5 1/2" x 5 1/2"
- Lumber length will vary depending on pergola dimensions.

Step 1



Measure the layout and place post bases in their required position.

Tip: The wood beam length should be the dimension between face of post bases. Check diagonal measurements are equal to verify layout is square.

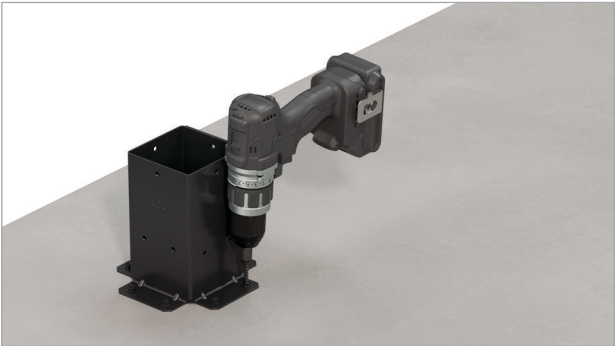
Step 3



Insert posts into each base. Plumb each post and install temporary bracing. After posts are plumb, install all screws into post bases.

Leave bracing in place until all beams are installed.

Step 2



Predrill holes for provided anchors using a 3/16" concrete drill bit. Install provided screw anchors to secure pergola to concrete.

Tip: Ensure holes are drilled at least 2 1/4" deep into concrete prior to installing anchors. Drive anchor until in contact with base, but do not overtighten.

Step 4



Place corner connectors onto each post and install screws. Ensure post is fully inserted into connectors (resting against stop tabs).

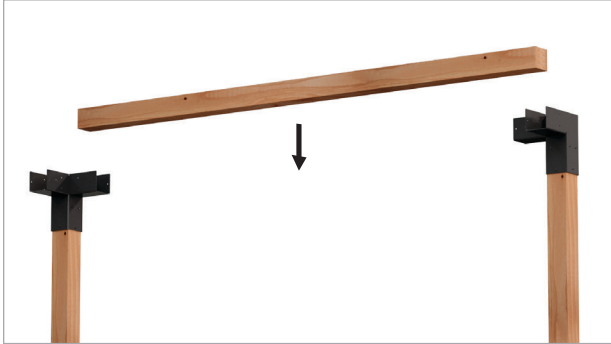
Sage System™ Installation Steps — Option 2

Single Pergola, No Sunshade

Outdoor Accents®

SIMPSON
Strong-Tie

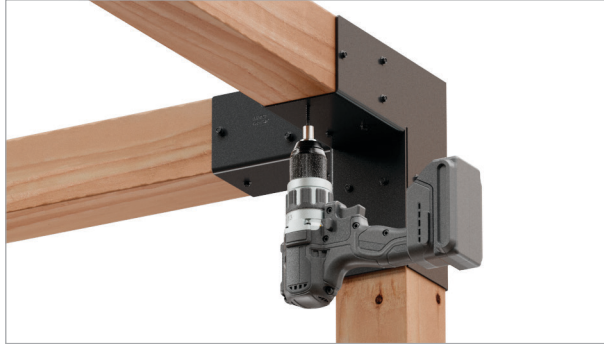
Step 5



With ladders in place, lift and place a beam into slots of corner connectors. Ensure beam is placed as far as possible into each connector.

Tip: If a beam's fit is too tight on one of its faces, try rotating it 90°.

Step 6



Install all screws into connector on each end of beam. Repeat Steps 5 and 6 for remainder of beams. Remove temporary bracing.

Step 7



Enjoy.

DISCLAIMER: These instructions are provided as a general guide for assembling the Sage System single pergola without a sunshade. Users should ensure all parts are installed correctly and securely. The manufacturer is not responsible for any damages, injuries, or structural failures resulting from improper assembly, environmental factors, or misuse. Users assume full responsibility for verifying compliance with local building codes and ensuring proper anchoring for stability. If unsure, consult a qualified professional. Use this guide at your own risk.

See strongtie.com/warranty for more information.